



# Cambridge International AS & A Level

CANDIDATE  
NAME

CENTRE  
NUMBER

--	--	--	--	--

CANDIDATE  
NUMBER

--	--	--	--



## INFORMATION TECHNOLOGY

9626/13

Paper 1 Theory

May/June 2022

1 hour 45 minutes

You must answer on the question paper.

No additional materials are needed.

## INSTRUCTIONS

- Answer **all** questions.
- Use a black or dark blue pen.
- Write your name, centre number and candidate number in the boxes at the top of the page.
- Write your answer to each question in the space provided.
- Do **not** use an erasable pen or correction fluid.
- Do **not** write on any bar codes.
- You may use an HB pencil for any diagrams, graphs or rough working.
- Calculators must **not** be used in this paper.

## INFORMATION

- The total mark for this paper is 70.
- The number of marks for each question or part question is shown in brackets [ ].

This document has **12** pages. Any blank pages are indicated.

1 Paulo is carrying out a study on the level of noise caused by traffic in the streets around his home. He will need data for his study.

(a) Describe what is meant by direct data.

.....  
..... [1]

(b) Describe how Paulo could use direct data sources for his study.

.....  
.....  
.....  
.....  
.....  
.....  
.....  
.....  
.....  
.....  
.....  
.....  
.....  
.....  
.....  
.....  
..... [4]

- 2 Explain how high level language programs can be translated to run on different computer systems, including any difficulties which may result from this.

.....  
.....  
.....  
.....  
.....  
.....  
.....  
.....  
.....  
.....

[4]

- 3 Wei is trying to minimise the effects of malware on her computer system.

Describe the types of software Wei would need and how she could use them to help prevent malware affecting her computer system.

.....  
.....  
.....  
.....  
.....  
.....  
.....  
.....  
.....  
.....

[4]

4 The directors of a company wish to create a database of customers. They are not sure whether they should ask a computer programmer to produce custom written software or they should purchase off-the-shelf software.

(a) Describe the features of custom written software.

.....  
.....  
.....  
.....  
.....  
.....  
.....  
.....  
.....  
.....  
.....  
.....  
.....  
.....  
..... [4]

(b) Describe the features of off-the-shelf software.

.....  
.....  
.....  
.....  
.....  
.....  
.....  
.....  
.....  
.....  
.....  
.....  
.....  
..... [4]







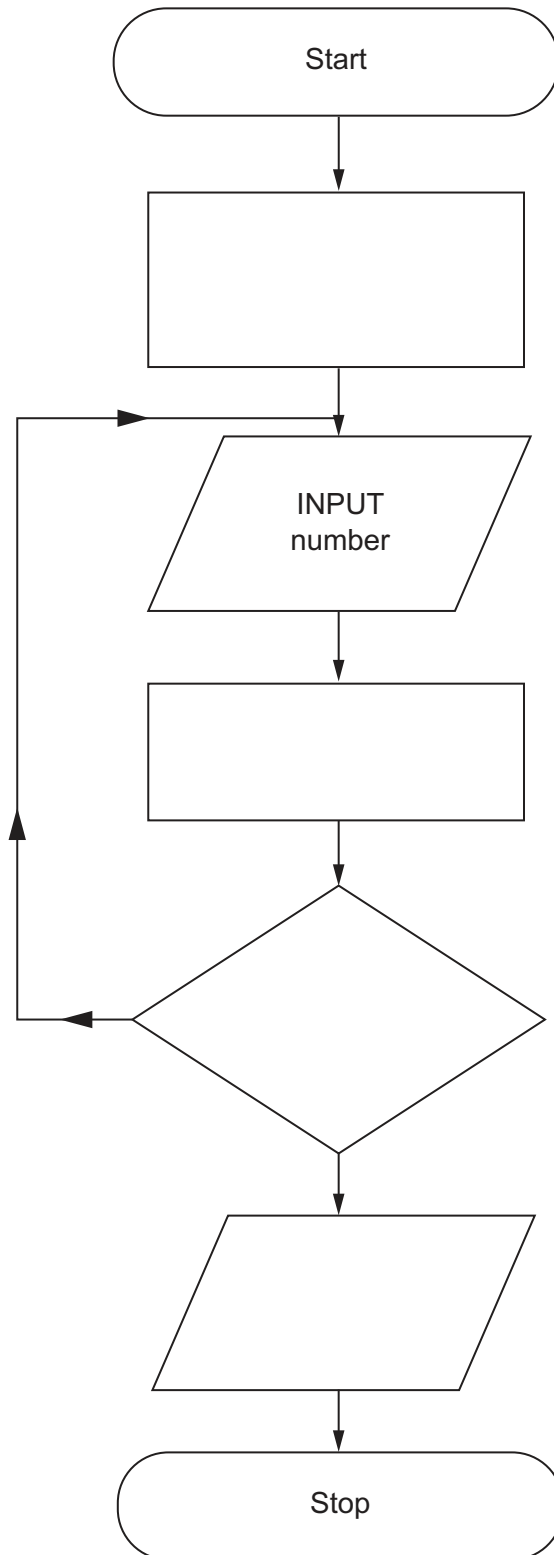








- 11 Complete the flowchart below to add up 6 numbers.  
Use the variable *total* to store the sum of the numbers and the variable *count* to control the number of times the loop is repeated.



[7]

**BLANK PAGE**

---

Permission to reproduce items where third-party owned material protected by copyright is included has been sought and cleared where possible. Every reasonable effort has been made by the publisher (UCLES) to trace copyright holders, but if any items requiring clearance have unwittingly been included, the publisher will be pleased to make amends at the earliest possible opportunity.

To avoid the issue of disclosure of answer-related information to candidates, all copyright acknowledgements are reproduced online in the Cambridge Assessment International Education Copyright Acknowledgements Booklet. This is produced for each series of examinations and is freely available to download at [www.cambridgeinternational.org](http://www.cambridgeinternational.org) after the live examination series.

Cambridge Assessment International Education is part of Cambridge Assessment. Cambridge Assessment is the brand name of the University of Cambridge Local Examinations Syndicate (UCLES), which is a department of the University of Cambridge.